

Material/Application

Lightweight rigid underlay material suitable for different type of roofing material (e.g. clay tiles, concrete tiles, slate).

Corrugated bitumen sheet reinforced with cellulosic fibers and thermosetting resin. The composite is colored with inorganic pigments.

Technical Characteristics

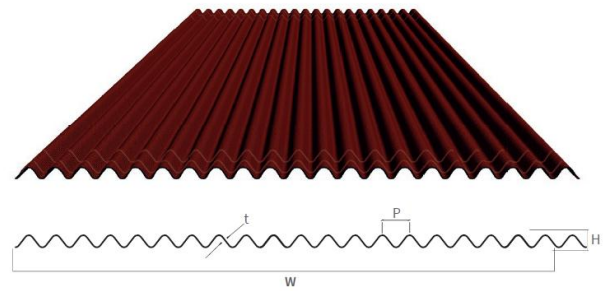
Length (m)	L	200 cm
Width (m)	W	101 cm
Thickness	t	2.9 mm
Heigh of corrugation	H	22 mm
Pitch of corrugation	P	48 mm
Gross surface		2.02 m ²
Weight of product		6.84 kg
Installed Weight (kg/m ²)		3.39 kg/ m ²
Corrugations		21

Mechanical & physical properties

Bending under downward load	> 500 N/m ²
Impact strength	Not applicable
Tearing strength	Not applicable
Water impermeability	Pass ¹
Proportion of bitumen	> 40%
Homogeneity	Pass ²
Water absorption	< 20%
Water vapor permeability – EN ISO 12572	< 400μ

¹No drop of water underneath sheet after 48 hours

²No area larger than 1 cm² without bitumen



Embossing positioning	a = b = 27.5 mm	± 2 mm
Embossing height	he = 1.5 mm	± 0.5 mm
Embossing spacing	c = 45 mm	± 2 mm
Width of embossing line	we = 15 mm	± 0.5 mm

Fig. Dissymmetry of the cut at shear

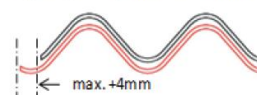
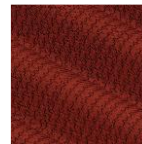


Fig. Positioning of embossing lines



Color



Red

Installation

Special conditions of installation are required. Refer to the installation guide.

Warranty

All the claims will be considered with respect to application recommendations issued by Onduline company but see terms and conditions.



Fire resistance

Reaction to fire – EN 13501-1	E
-------------------------------	---

Durability

Water impermeability after ageing	Pass ¹
-----------------------------------	-------------------

Tariff code - HS: 68079000

This TDS was made based on currently available information. Product was made in accordance with above mentioned parameters, but producer/distributor can't anticipate any future change as well as change of regulations. It is the consumer's responsibility to use the product in accordance to producer/ distributor recommendations and his needs. All the claims will be considered with respect to application recommendations issued by Onduline company but see terms and conditions. .

OFIC Philippines Inc.

Common Ground, 9F, Intellectual Property Inc., #28, McKinley Upper Road McKinley Hill Town Center, Taguig City, Philippines 1634

info@onduline.ph