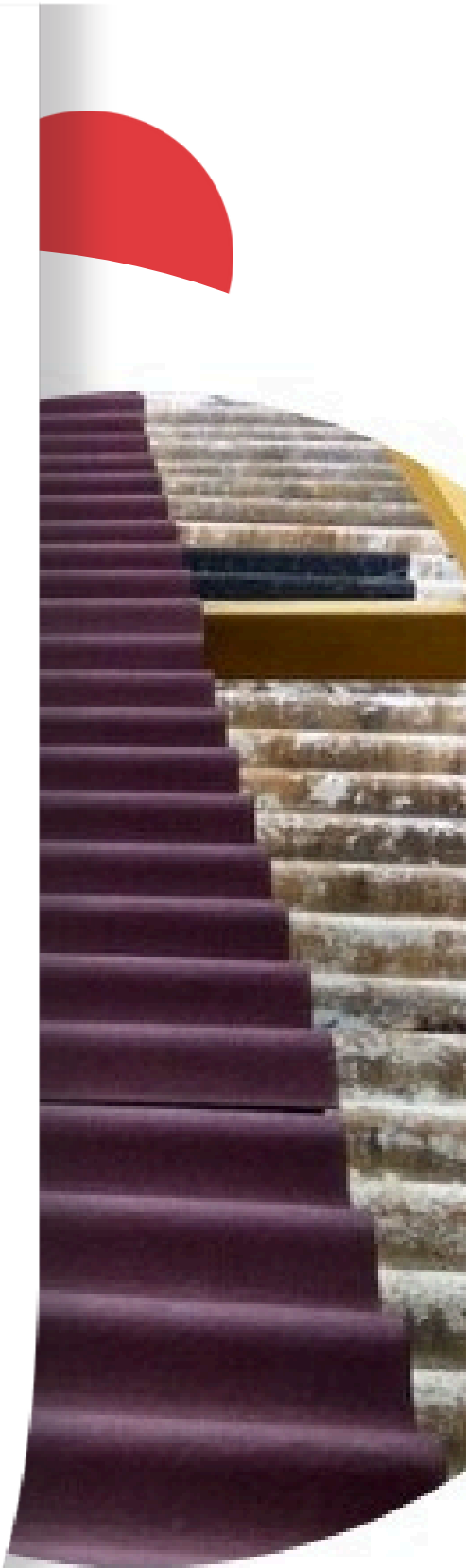
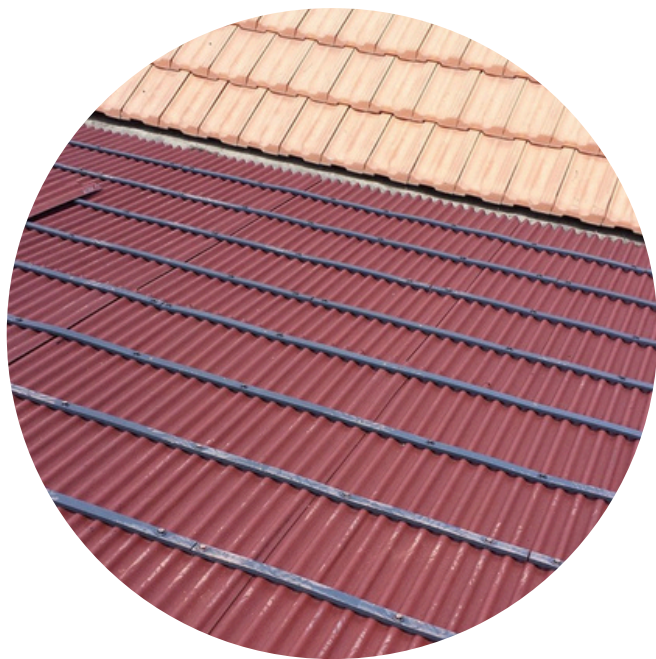


# ONDULINE®

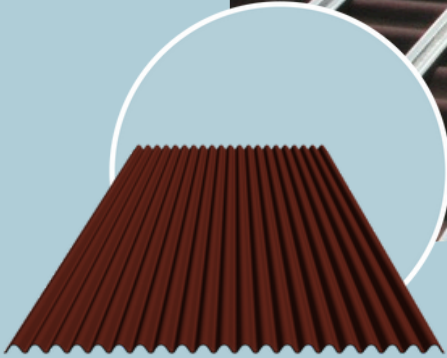


## ISOLINE UNDERROOFING SYSTEM



# ISOLINE®

Underroofing System for Waterproofing and Thermal Insulation



Introducing the revolutionary **ISOLINE®** Under Roofing System, a game-changer in the roofing industry. This innovative solution offers unparalleled protection, enhanced thermal efficiency, and a seamless integration with your roofing structure, transforming the way you approach your next project.



Waterproofing



Thermal Comfort



Flexible



Double Protection

## Specifications

LENGTH	2000 mm [-0.1 ; +0.4 cm]
WIDTH	1010 mm [± 2.5 cm]
THICKNESS	2.9 mm [-10 % ; +10 %]
HEIGHT OF CORRUGATION	22 mm [± 2 mm]
WEIGHT PER m <sup>2</sup>	3.4 kg / m <sup>2</sup> [-10 % ; +10 %]
GROSS SURFACE	2.02 m <sup>2</sup>
# CORRUGATIONS	21

## Applications



Individual & collective housing



Leisure housing

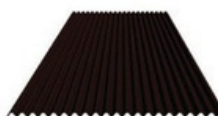


Commercial buildings and resorts



Renovation

## Colours



Black



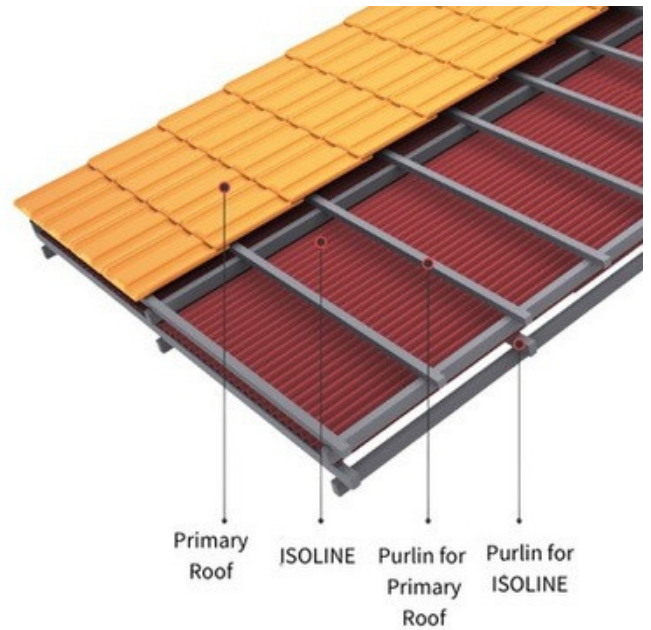
Red

## ABOUT ISOLINE®

The ISOLINE® Under Roofing System is an innovative solution that elevates architectural roofing by providing superior water protection and temperature management, ensuring a more reliable and energy-efficient roofing solution. The system is designed to be installed underneath the primary roofing materials, providing a comprehensive solution to prevent water leaks. The System offers a comprehensive solution that addresses the challenges of traditional roofing, providing a reliable and sustainable roofing system.

### How does ISOLINE® work?

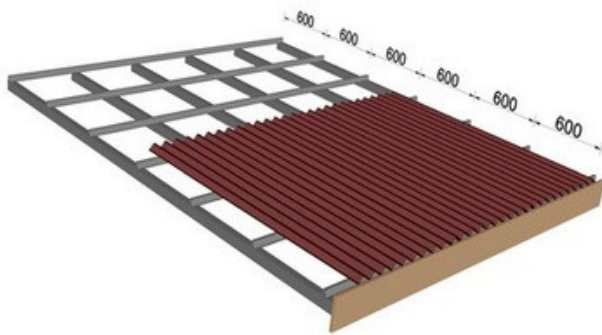
- Large waterproofing sheets are laid under the tile, creating a roof under the roof
  - ISOLINE® repels water that might seep through tiles
- Installation is quick, offering rapid waterproofing



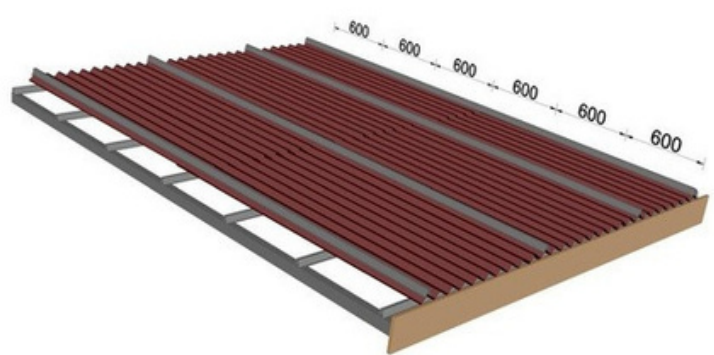
## BENEFITS OF USING ISOLINE®

- Low Roof Pitches
- Ventilated Roof
- Complete Waterproofing

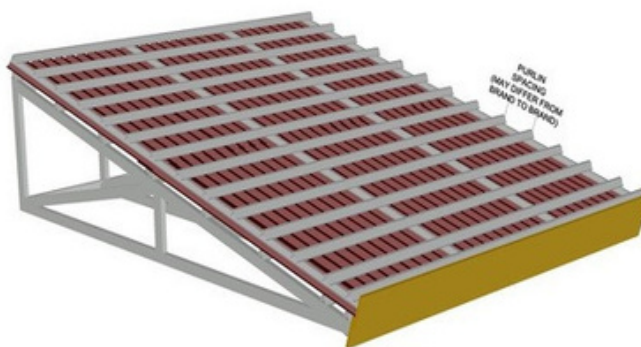
## INSTALLATION GUIDELINES



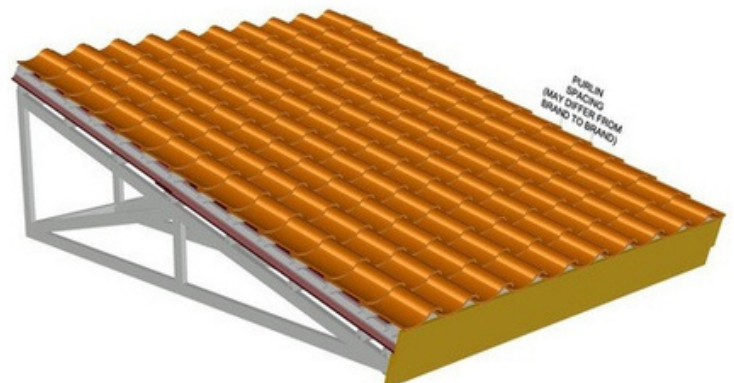
ISOLINE® to be fixed over roof structure with a **purlin distance of 60 cm**



Counter batten / Rafter to be placed over ISOLINE®



BATTEN / Purlin at spacing specified by primary roof manufacturer



Install primary roof as per manufacturer guidelines

## ABOUT ONDULINE®

For about **80 years**, ONDULINE® strategy has successfully combined growth and international development.

The cellulose-bitumen-based roofing and under-roofing material known as ONDULINE® was invented and launched in the French market in 1944 by Gaston Gromier.



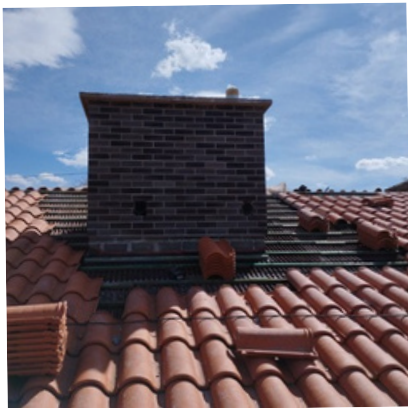
Specialized in **innovative roofing systems**, the group has been growing since then, until leading the market of lightweight roofing systems.

We are the undisputable leader in this segment, manufacturing **more than 95%** of world production of bitumen sheets.

**ONDULINE® is part of Kingspan's Roofing and Waterproofing division.**

Working alongside Kingspan since 2022, we both share common goals: to thrive as an international group and cultivate an entrepreneurial and collaborative culture.

Our shared focus is on **growth, providing excellent customer service, and accelerating the transformation** of building solutions towards **more eco-responsible solutions.**



**OFIC Philippines Inc.**

Common Ground, 9F, Intellectual Property Inc.,  
#28, McKinley Upper Road McKinley Hill Town  
Center, Taguig City, Philippines 1634  
info@onduline.ph



**Onduline®**  
Lightweight roofing systems

Onduline reserves the right to amend product specifications without prior notice. Product thicknesses shown in this document should not be taken as being available ex-stock and reference should be made to the current Onduline price-list or advice sought from Onduline Customer Service Department. The information, technical details and fixing instructions etc. included in this literature are given in good faith and apply to uses described. Recommendations for use should be verified for suitability and compliance with actual requirements, specifications and any applicable laws and regulations. For other applications or conditions of use, Onduline offers a Technical Advisory Service, the advice of which should be sought for uses of Onduline products that are not specifically described herein.