

Technical data sheet

ONDULINE® TILE

PH032025

Material/Application

Lightweight corrugated roofing material, designed for hot and humid climates.

Corrugated bitumen sheet reinforced with cellulosic fibers and thermosetting resin. The composite is colored with inorganic pigments on both sides.

Technical characteristics

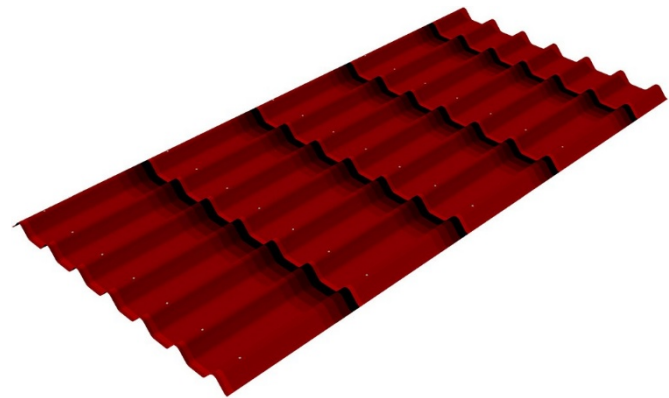
Length (m)	L	200 cm
Width (m)	W	97 cm
Thickness	t	3 mm
Height of corrugation	H	38 mm
Pitch of corrugation	P	97 mm
Product surface		1.94 m ²
Weight of product		6.11 kg
Gross Weight per m ²		3.1 kg /m ²
Corrugations + Flat		7 + 6

Mechanical & physical properties

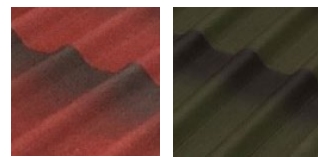
Bending under downward load	> 700 N/m ²
Impact strength	250 mm
Tearing strength	> 150N
Water impermeability	Pass ¹
Proportion of bitumen	> 40%
Homogeneity	Pass ²
Water absorption	< 20%
Water vapor permeability EN ISO 12572	Not applicable

Durability

Water impermeability after ageing	Pass ¹
Tearing strength after ageing	> 150 N
Thermal coefficient	< 100.10-6 1/K



Colors



Dual Red

Dual Green

Installation

Special conditions of installation are required. Refer to the installation guide.

Warranty

All the claims will be considered with respect to application recommendations issued by Onduline company but see terms and conditions.



Fire resistance

Reaction to fire – EN 13501-1	E
External fire performance – EN 13501-5	Froof

Tariff code - HS: 68079000

This TDS was made based on currently available information. Product was made in accordance with above mentioned parameters, but producer/distributor can't anticipate any future change as well as change of regulations. It is the consumer's responsibility to use the product in accordance to producer/ distributor recommendations and his needs. All the claims will be considered with respect to application recommendations issued by Onduline company but see terms and conditions. .

OFIC Philippines Inc

#73 Bayani Road, Unit 2 Heinen Building, AFPPHOVAI Phase II Western Bicutan, Taguig City Philippines 1630

Onduline®
Lightweight roofing systems